

FIG.1

FIG.2

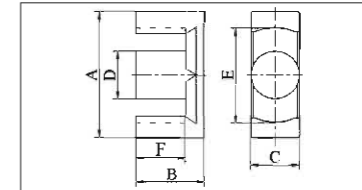
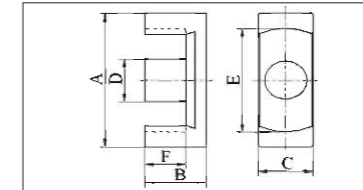
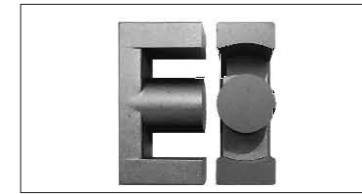
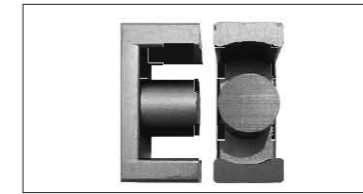


FIG.3

FIG.4

**EER 型 / EER Core**

型号 TYPE	图例 FIG.	尺寸 Dimensions ( mm )					
		A	B	C	D	E	F
EER16/15/5	1	16.30±0.40	7.50±0.20	5.00±0.30	5.0+0.15/-0.3	11.5min	5.35±0.20
EER20/20/11	2	20.00±0.45	10.20±0.20	11.00±0.20	7.70±0.20	16.4+0.5/-0.3	2.40±0.20
EER25/12.4/11	3	25.00±0.35	6.20±0.20	11.00±0.20	9.50±0.20	19.5±0.35	2.95±0.20
EER25/18/11C	3	25.00±0.30	9.05±0.15	11.00±0.15	9.50±0.15	19.5±0.3	5.80±0.15
EER25.5/18/8G	4	25.50±0.50	9.30±0.30	7.50±0.30	7.50±0.30	19.6min	6.20±0.30
EER26.8/26.6/8.5	4	26.80±0.40	13.30±0.15	8.50±0.20	8.40±0.20	20.4±0.4	10.00±0.20
EER28/28/11A	3	28.50±0.60	14.00±0.30	11.40±0.30	9.90±0.30	21.2min	9.60±0.30
EER28/34/11B	3	28.50±0.60	16.90±0.30	11.40±0.30	9.90±0.30	21.2min	12.50±0.30
EER28/17/11	3	28.55±0.55	8.35±0.20	11.40±0.25	9.90±0.25	21.2min	5.15±0.15
EER29/28/11A	3	29.20±0.80	14.40±0.30	11.30±0.30	9.90±0.30	21.8min	10.10±0.30
EER29.4/39.2/11.4	3	29.40±0.50	19.60±0.25	11.40±0.25	9.90±0.20	22.6min	15.30±0.20
EER30/19/20B	3	30.00±0.50	9.40±0.15	20.30±0.30	13.2+0.3/-0.2	25.0min	6.60±0.20
EER30/28/11	3	30.00±0.55	14.30±0.25	11.40±0.25	9.90±0.20	23min	9.90±0.20
EER30/33/11	3	30.00±0.55	16.90±0.25	11.40±0.25	9.90±0.25	23min	12.53±0.28
EER33/34/14F	3	33.00±0.60	17.30±0.30	14.00±0.30	12.50±0.30	24.7min	12.80±0.30
EER34/35/11B	4	34.20±0.80	17.60±0.20	10.80±0.30	10.80±0.30	25.6min	12.40±0.30
EER35/42/11B	4	35.00±0.70	21.00±0.30	11.30±0.40	11.30±0.30	25.3min	150±0.30
EER36/43/11M	4	36.00±0.60	21.60±0.30	11.30±0.30	11.30±0.30	27.5min	15.60±0.30
EER39/29/13A	4	39.10±0.60	14.30±0.20	12.50±0.25	12.50±0.25	29.3min	9.10±0.30
EER39/44/13I	4	39.10±0.90	22.20±0.30	12.70±0.40	12.70±0.30	29.3min	17.00±0.40
EER40/42/15	3	40.0+0.8/-0.5	21.30±0.30	15.00±0.30	14.00±0.30	30.7min	15.30±0.30

C1	Ae	Le	Amin	Ve	AL(±25%)				重量 g / PRS
					TP4	TP4A	TP4W	TPW33	
1.66	21.10	35.12	19.05	741.00	1150	1200	1400	1500	3.82
0.40	50.12	47.16	46.57	2363.70	2200	2200			18.43
0.45	71.60	32.35	70.88	2316.30	4400	4400	5100	5400	12.40
0.61	71.62	43.75	70.88	3133.40	3400	3450	4150	4450	15.89
1.05	44.93	47.38	44.08	2128.70	2000	2050	2480	2600	10.70
1.10	57.01	62.93	55.42	3587.80	1900	1900	2200	2450	18.20
0.73	85.88	62.85	76.98	5397.80	2800	2800	3500	4000	28.43
0.87	85.20	74.38	76.98	6336.90	2500	2550	3260	3600	32.93
0.55	78.63	43.45	72.96	3416.30	4200	4300			17.80
0.78	84.48	65.63	76.98	5544.40	2600	2700	3300	3600	28.86
1.05	82.72	86.73	76.98	7174.40	2100	2150	2690	2900	33.80
0.35	136.04	47.36	113.68	6442.20	6100	6100			34.20
0.78	84.83	65.79	76.98	5581.10	3100	3100	3400	3600	29.02
0.91	84.05	76.24	76.98	6408.10	2450	3100	3260	3500	33.90
0.62	126.95	78.58	122.72	9975.40	3800	3800	4600	5100	50.32
0.83	96.50	80.26	91.61	7744.60	2500	2600	3570	3900	40.00
0.82	110.72	91.19	100.29	10096.20	2600	2600	3200	4050	52.77
0.90	105.50	95.03	98.05	10025.30	2600	2600	3400	3600	52.10
0.56	126.26	70.46	122.72	8896.80	4000	4350	5200	5550	45.00
0.80	127.11	102.11	124.66	12978.90	2800	2800	3800	3900	57.80
0.61	158.12	96.33	150.62	15230.90	3300	3500	4750	5250	80.50

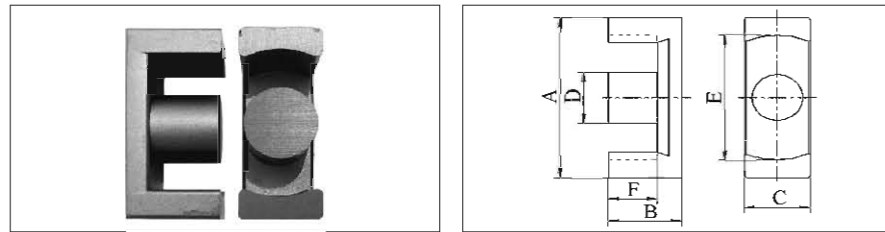


FIG.3

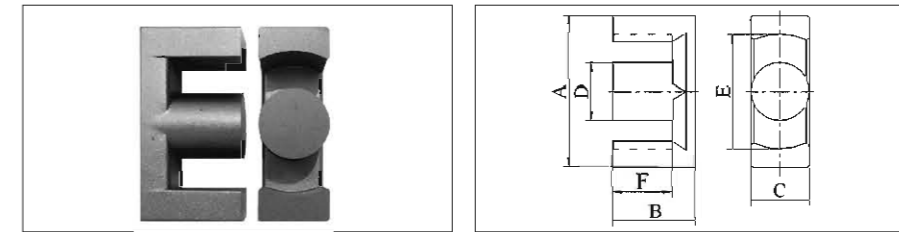


FIG.4

**EER 型 / EER Core**

型号 TYPE	图例 FIG.	尺寸 Dimensions ( mm )					
		A	B	C	D	E	F
EER40/45/13A	4	40.00±0.80	22.40±0.30	13.30±0.30	13.30±0.30	29.0min	15.40±0.30
EER42/42/15A	4	42.00±0.80	21.40±0.30	15.2+0.3/-0.2	15.2+0.3/-0.2	30.5min	15.6+0.2/-0.25
EER42/44/15H	4	42.00±0.80	22.00±0.30	15.2+0.3/-0.2	15.2+0.3/-0.2	30.5min	15.40±0.30
EER42/42/20A	3	42.15±0.65	21.20±0.30	19.60±0.40	17.20±0.30	31.8min	15.30±0.30
EER43/45/15R	4	43.00±0.80	22.40±0.30	15.50±0.40	15.50±0.30	31min	15.50±0.20
EER44/45/15B	4	44.00±1.00	22.30±0.30	14.80±0.40	14.80±0.40	32.5min	16.50±0.40
EER49/50/16A	4	49.00±0.60	24.70±0.20	16.30±0.30	16.30±0.20	37.3±0.5	18.10±0.25
EER49/54/17Q	4	49.00±1.00	27.00±0.30	17.20±0.40	17.20±0.30	36.5min	18.70±0.30
EER53/46/22F	3	53.20±0.80	23.20±0.30	21.40±0.30	19.90±0.30	38.7min	16.5+0.5/-0.1
EER54/55/19A	4	54.50±1.30	27.60±0.20	18.90±0.40	18.90±0.40	40.1+2.2/-0	20.20±0.40
EER59/62/22A	4	59.80±1.40	31.2+0/-0.4	22.1+0/-0.9	22.1+0/-0.9	43.6min	22.1+0.9/-0
ETD25/27/10	4	25+0.5/-0.3	13.4+0.4/-0	9.50±0.25	9.50±0.25	18.9min	9.7+0.4/-0
ETD29/32/10B	4	29.80±0.80	15.80±0.30	9.50±0.30	9.50±0.30	22.0min	11.00±0.30
ETD34/34/11B	4	34.20±0.80	17.30±0.20	10.80±0.30	10.80±0.30	25.6min	12.10±0.30
ETD39/40/13M	4	39.10±0.90	19.80±0.20	12.70±0.40	12.70±0.30	29.3min	14.60±0.40
ETD44/45/15	4	44.00±1.00	22.30±0.30	14.80±0.40	14.80±0.40	32.5min	16.50±0.40
ETD49/49/16C	4	49.00±1.00	24.70±0.30	16.30±0.40	16.30±0.40	36.1min	18.10±0.40
ETD54/54/19	4	54.20±1.00	27.10±0.30	18.90±0.40	18.90±0.30	40.5min	19.50±0.30

C1	Ae	Le	Amin	Ve	AL(±25%)				重量 g / PRS
					TP4	TP4A	TP4W	TPW33	
0.64	151.92	97.37	138.93	14792.00	3500	3600	4700	4800	76.89
0.54	181.46	97.47	177.66	17687.30	4100	4100			92.00
0.52	186.89	97.89	182.65	18294.80	4000	4100	5900	6400	93.60
0.41	231.68	95.34	231.25	22088.10	5200	5200			114.34
0.51	196.28	99.25	188.69	19480.60	3800	3800			104.30
0.60	171.94	103.68	171.68	17826.40	3600	3800	5100	5600	94.00
0.54	211.04	114.69	208.67	24205.00	4000	4000			123.07
0.50	238.23	118.44	221.19	28216.90	4200	4200			148.00
0.35	309.79	108.74	278.20	33685.00	5500	7450	9000	9750	173.60
0.45	279.99	127.22	279.62	35620.30	5500	7450			188.19
0.39	364.23	140.85	359.43	51303.30	6000	6100	8500	8600	262.74
0.91	67.27	60.90	62.80	4096.70	2360	2410	3100	3300	21.30
0.93	75.91	70.78	70.88	5373.10	2200	2250	2900	3150	27.80
0.82	96.57	79.06	91.61	7634.60	2500	2500	3750	3900	39.51
0.73	127.26	92.51	124.66	11772.80	3000	3000	4100	4400	61.00
0.60	171.94	103.68	171.68	17826.40	3600	3600	5100	5600	90.60
0.54	212.27	114.56	208.67	24317.70	4000	4000	5700	5900	122.00
0.45	277.34	124.73	268.06	34592.30	5400	5400	6500	7100	166.00