

FIG.1

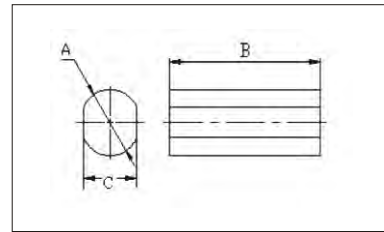


FIG.2

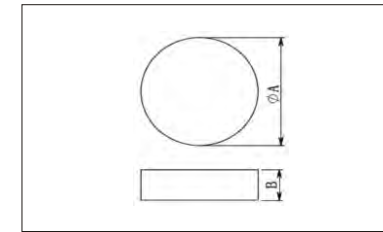
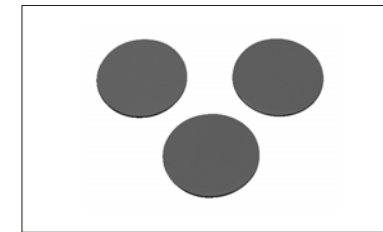


FIG.3

**AR 型 / AR Core**

型号 TYPE	图例 FIG.	尺寸 Dimensions ( mm )			重量 g /PCS
		A	B	C	
AR4/15	1	4.00±0.20	15.00±0.40		1.15
AR5/30	2	5.00±0.20	30.00±0.40		2.83
AR5/20.4	1	5.00±0.20	20.40±0.30		1.92
AR5/60	2	5.00±0.30	60.00±0.10	4.60±0.30	5.60
AR6/30	1	6.00±0.20	30.00±0.50		4.00
AR6/20	1	6.00±0.20	20.00±0.50		2.25
AR6.35/25.4	1	6.35±0.25	25.40±0.70		4.20
AR7.2/6	3	7.20±0.20	6.00±0.20		1.17
AR8/25	1	8+0.1/-0.20	25.00±0.30		5.80
AR8/31.75	1	8.00±0.35	31.75±0.75		8.30
AR8/38.10	1	8.00±0.35	38.10±0.75		6.20
AR9.5/6	1	9.50±0.20	6.00±0.30		2.00
AR9.5/29	1	9.50±0.20	28.70±0.50		9.51

型号 TYPE	图例 FIG.	尺寸 Dimensions ( mm )			重量 g /PCS
		A	B	C	
AR10/20	1	10.00±0.50	20.00±0.50		7.50
AR10/6	3	10.00±0.30	6.00±0.20		2.30
AR10/28	1	10.00±0.20	28+0/-1		10.20
AR10/30	1	10.00±0.35	30.00±0.60		8.50
AR10/40	1	10+0.3/-0.05	40.30±+0.3/-0.6		14.60
AR10/45	1	10.00±0.20	45.00±0.50		17.00
AR10/48.5	2	10.00±0.40	48.50±1.00	8.90±0.20	20.10
AR12/40	1	12.00+0/-0.20	40.00±1.00		21.70
AR12.3/41.3	1	12.30±0.40	41.30±0.80		25.50
AR14.3/4	3	14.30±0.25	4.00±0.05		3.10
AR17/4	3	17.00±0.30	4.00±0.20		4.40
AR50/13	3	50.00±1.00	13.00±0.10		119.97
AR50/10	2	10.00±0.40	50.00±1.00	8.90±0.20	15.00